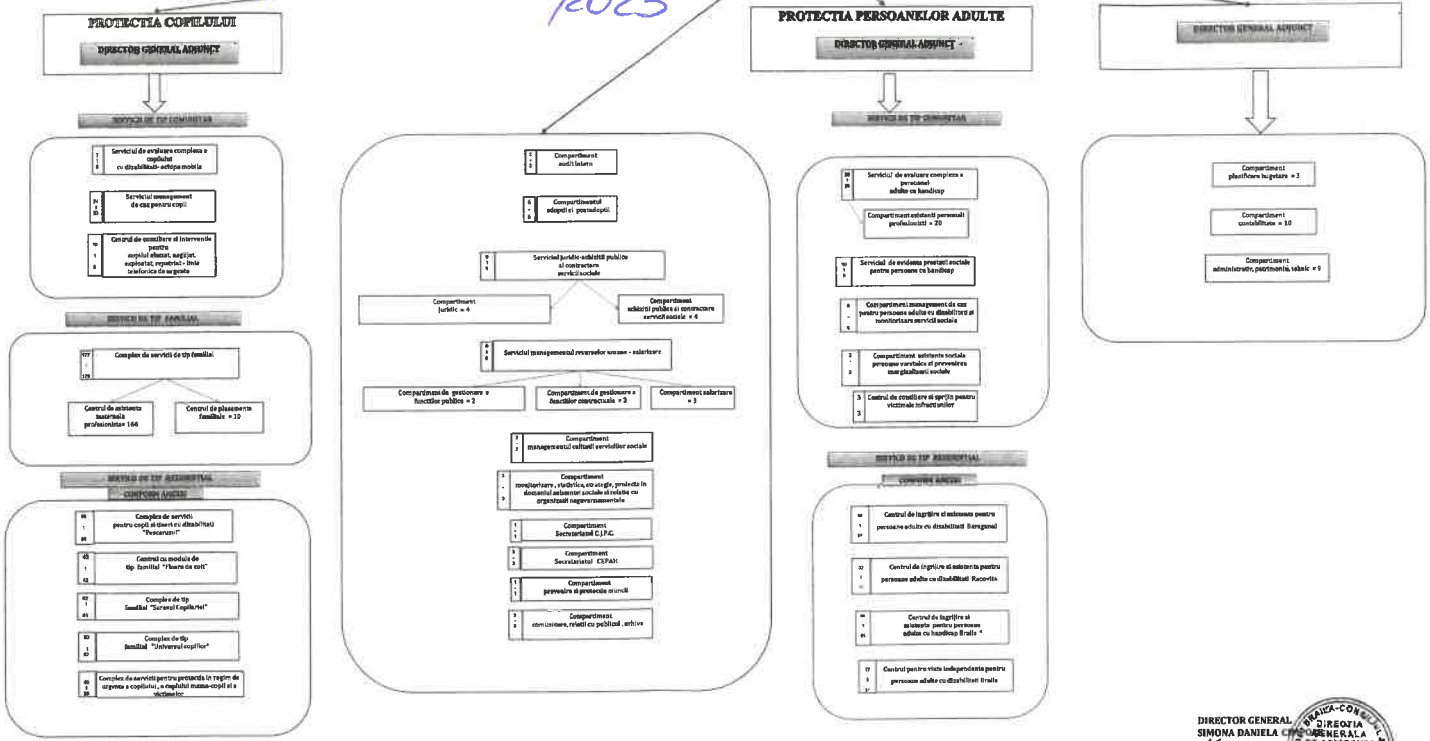




| | |
|--------------------------|-----|
| TOTAL POSTURI 773 | |
| FUNCTII PUBLICE 96 | |
| - de conducere | 6 |
| - de executie | 42 |
| FUNCTII CONTRACTUALE 725 | |
| - de conducere | 15 |
| - de executie | 710 |

*Anexa nr. 1 la
HOTARARILE nr. 153/2023*

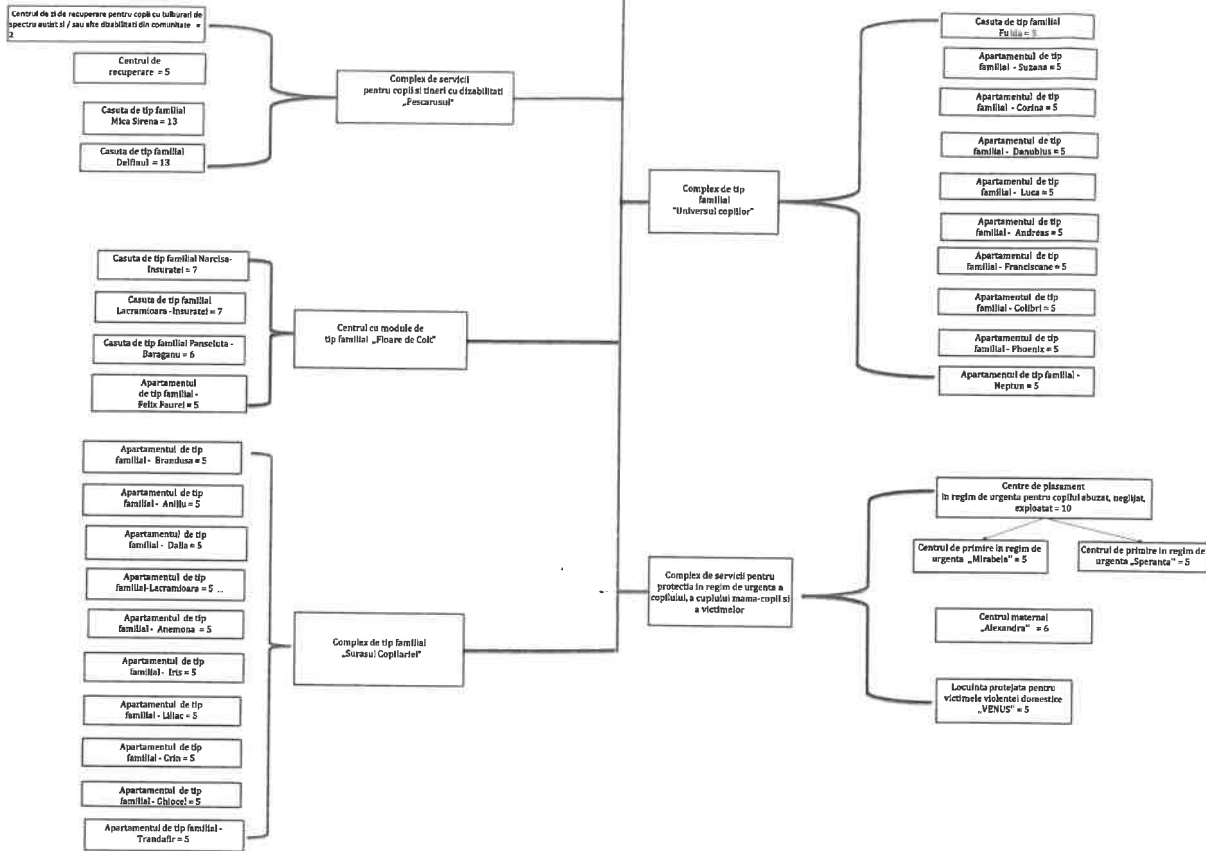


*Centrul de ingrijire si asistenta pentru persoane adulte cu handicap Braila se afla in proces de restructurare conform OUG nr. 69/2018 si Decretul nr. 878/2018



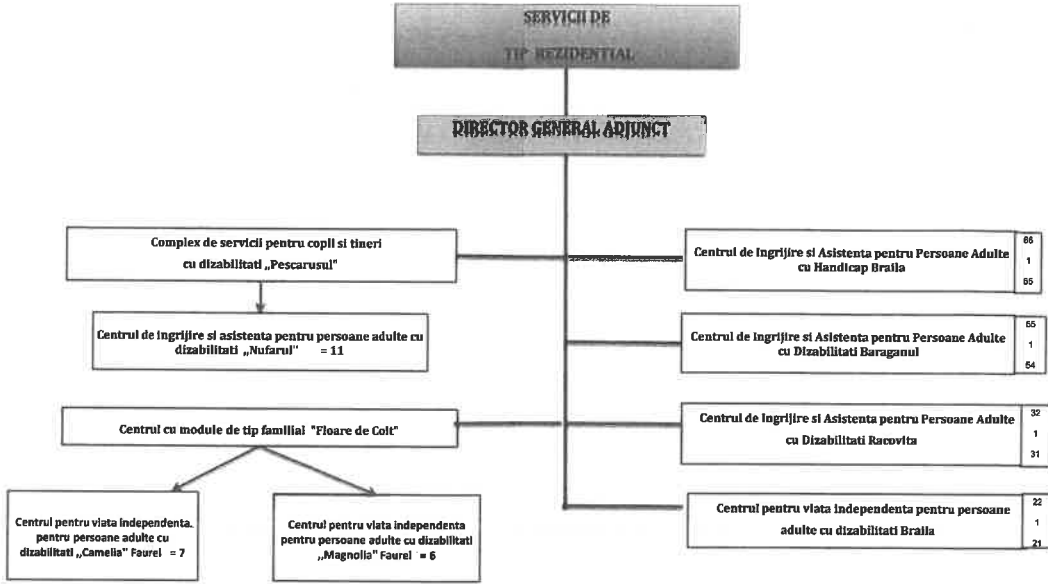
PROTECTIA COPILULUI

SERVICIU DE TIP REZIDENTIAL



DIRECȚIA GENERALĂ DE ASISTENȚĂ SOCIALĂ ȘI PROTECȚIA COPILULUI
DIRECTOR GENERAL SIMONA DANIELA CIMPOIE

PROTECTIA PERSOANELOR ADULTE



DIRECTOR GENERAL ADJUNCT
SIMONA DANIELA COMANEA

STAT DE FUNCȚII SI DE PERSONAL

Directia Generala de Asistenta Sociala si Protectia Copilului Braila

| NR. CRT. | Numele, prenumele/VACANT, temporar VACANT dupa caz | STRUCTURA | FUNCTIA DE DEMNITATE PUBLICA | Funcția publică | | | Clasa studii | Nivelul studiilor | Gradul profesional | Funcția contractuală | | Nivelul studiilor | Treapta profesională/grad | OBSERVAȚII |
|----------|--|--|------------------------------|-------------------------|-----------------------------|-------------|--------------|-------------------|--------------------|----------------------|-------------|-------------------|---------------------------|------------|
| | | | | inalt functionar public | de conducere * | de executie | | | | de conducere | de executie | | | |
| 1 | OCUPAT | DIRECTIA GENERALĂ DE ASISTENȚA SOCIALĂ SI PROTECTIA COPILULUI BRAILA | | | director general | | I | S | | | | | | |
| 2 | OCUPAT | | | | director general adjunct | | I | S | | | | | | |
| 3 | OCUPAT | | | | director general adjunct | | I | S | | | | | | |
| 4 | VACANT | | | | director general adjunct | | I | S | | | | | | |
| 5 | OCUPAT | Serviciul juridic-achiziții publice si contractare servicii sociale | | | sef serviciu | | I | S | | | | | | |
| 6 | VACANT | Compartiment juridic | | | | | | | | | | | | |
| 7 | OCUPAT | | | | consilier juridic | | I | S | debutant | | | | | |
| 8 | OCUPAT | | | | consilier juridic | | I | S | principal | | | | | |
| 9 | VACANT | | | | consilier juridic | | I | S | principal | | | | | |
| 10 | OCUPAT | Compartiment achiziții publice si contractare servicii sociale | | | | | | | | | | | | |
| 11 | OCUPAT | | | | Consilier achiziții publice | | I | S | superior | | | | | |
| 12 | OCUPAT | | | | Consilier achiziții publice | | I | S | superior | | | | | |
| 13 | OCUPAT | | | | Inspector | | I | S | superior | | | | | |
| | | | | | Referent de specialitate | | II | SSD | superior | | | | | |

Anexa nr.2 la
HCL BODITA nr.153/
2023

| | | | | | | | | | | | | | | | | | | | | | |
|--|--------|--|--|--|--|--|--|--|--|--|--|--|--|--|--|--|--|--|---------------------------|----|------------|
| 77 | OCUPAT | | | | | | | | | | | | | | | | | | asistent social | S | principal |
| 78 | OCUPAT | | | | | | | | | | | | | | | | | | asistent social | S | principal |
| 79 | OCUPAT | | | | | | | | | | | | | | | | | | asistent social | S | principal |
| 80 | OCUPAT | | | | | | | | | | | | | | | | | | asistent social | S | principal |
| 81 | OCUPAT | | | | | | | | | | | | | | | | | | asistent social | S | practicant |
| 82 | OCUPAT | | | | | | | | | | | | | | | | | | asistent social | S | practicant |
| 83 | OCUPAT | | | | | | | | | | | | | | | | | | asistent social | PL | principal |
| 84 | OCUPAT | | | | | | | | | | | | | | | | | | inspector de specialitate | S | IA |
| 85 | VACANT | | | | | | | | | | | | | | | | | | asistent social | S | principal |
| 86 | VACANT | | | | | | | | | | | | | | | | | | asistent social | S | specialist |
| 87 | VACANT | | | | | | | | | | | | | | | | | | asistent social | S | specialist |
| 88 | VACANT | | | | | | | | | | | | | | | | | | asistent social | S | specialist |
| 89 | VACANT | | | | | | | | | | | | | | | | | | asistent social | S | specialist |
| 90 | VACANT | | | | | | | | | | | | | | | | | | asistent social | S | practicant |
| 91 | VACANT | | | | | | | | | | | | | | | | | | asistent social | S | practicant |
| 92 | VACANT | | | | | | | | | | | | | | | | | | asistent social | S | practicant |
| 93 | VACANT | | | | | | | | | | | | | | | | | | asistent social | S | practicant |
| 94 | OCUPAT | | | | | | | | | | | | | | | | | | psiholog | S | principal |
| 95 | VACANT | | | | | | | | | | | | | | | | | | psiholog | S | specialist |
| 96 | VACANT | | | | | | | | | | | | | | | | | | psiholog | S | practicant |
| 97 | OCUPAT | | | | | | | | | | | | | | | | | | ingrijitor | G | |
| Complex de servicii de tip familial | | | | | | | | | | | | | | | | | | | | | |
| 98 | OCUPAT | | | | | | | | | | | | | | | | | | sef serviciu | S | |
| Centrul de plasamente familiale | | | | | | | | | | | | | | | | | | | | | |
| 99 | OCUPAT | | | | | | | | | | | | | | | | | | asistent social | S | principal |
| 100 | OCUPAT | | | | | | | | | | | | | | | | | | asistent social | S | principal |
| 101 | VACANT | | | | | | | | | | | | | | | | | | asistent social | S | practicant |
| 102 | OCUPAT | | | | | | | | | | | | | | | | | | asistent social | S | specialist |
| 103 | OCUPAT | | | | | | | | | | | | | | | | | | asistent social | S | practicant |

| | | | | | | | | | | | | | | | | | | | | | | |
|---|--------|--|--|--|--|--|--|--|--|--|--|--|--|--|--|--|--|--|--|-----------------------------------|---|------------|
| 104 | VACANT | | | | | | | | | | | | | | | | | | | asistent social | S | debutant |
| 105 | OCUPAT | | | | | | | | | | | | | | | | | | | psiholog | S | principal |
| 106 | OCUPAT | | | | | | | | | | | | | | | | | | | psiholog | S | practicant |
| 107 | VACANT | | | | | | | | | | | | | | | | | | | psiholog | S | stagiar |
| 108 | VACANT | | | | | | | | | | | | | | | | | | | psiholog | S | stagiar |
| Centrul de asistenta maternala profesionista | | | | | | | | | | | | | | | | | | | | | | |
| 109 | OCUPAT | | | | | | | | | | | | | | | | | | | psiholog | S | principal |
| 110 | OCUPAT | | | | | | | | | | | | | | | | | | | psiholog | S | principal |
| 111 | VACANT | | | | | | | | | | | | | | | | | | | psiholog | S | practicant |
| 112 | VACANT | | | | | | | | | | | | | | | | | | | psiholog | S | stagiar |
| 113 | OCUPAT | | | | | | | | | | | | | | | | | | | asistent social | S | principal |
| 114 | OCUPAT | | | | | | | | | | | | | | | | | | | asistent social | S | principal |
| 115 | OCUPAT | | | | | | | | | | | | | | | | | | | asistent social | S | principal |
| 116 | OCUPAT | | | | | | | | | | | | | | | | | | | asistent social | S | principal |
| 117 | OCUPAT | | | | | | | | | | | | | | | | | | | asistent social | S | debutant |
| 118 | VACANT | | | | | | | | | | | | | | | | | | | asistent social | S | debutant |
| 119 | VACANT | | | | | | | | | | | | | | | | | | | asistent social | S | practicant |
| 120 | OCUPAT | | | | | | | | | | | | | | | | | | | asistent maternal profesionist | M | |
| 121 | OCUPAT | | | | | | | | | | | | | | | | | | | asistent maternal profesionist | M | |
| 122 | OCUPAT | | | | | | | | | | | | | | | | | | | asistent maternal profesionist | M | |
| 123 | OCUPAT | | | | | | | | | | | | | | | | | | | asistent maternal profesionist | M | |
| 124 | OCUPAT | | | | | | | | | | | | | | | | | | | asistent maternal profesionist | M | |
| 125 | OCUPAT | | | | | | | | | | | | | | | | | | | asistent maternal profesionist | M | |
| 126 | OCUPAT | | | | | | | | | | | | | | | | | | | asistent maternal profesionist | M | |
| 127 | OCUPAT | | | | | | | | | | | | | | | | | | | asistent maternal profesionist | M | |
| 128 | OCUPAT | | | | | | | | | | | | | | | | | | | asistent maternal profesionist | M | |
| 129 | OCUPAT | | | | | | | | | | | | | | | | | | | asistent maternal profesionist | M | |
| 130 | OCUPAT | | | | | | | | | | | | | | | | | | | asistent maternal profesionist | M | |
| 131 | OCUPAT | | | | | | | | | | | | | | | | | | | asistent maternal profesionist | M | |

| | | | | | | | | | | | | | | |
|--|-------------------|--|--|--|--|--|--|--|--|--|--|-----------------------------------|---|----|
| 161 | OCUPAT | | | | | | | | | | | asistent maternal profesionist | M | |
| 162 | OCUPAT | | | | | | | | | | | asistent maternal profesionist | M | |
| 163 | OCUPAT | | | | | | | | | | | asistent maternal profesionist | M | |
| 164 | OCUPAT | | | | | | | | | | | asistent maternal profesionist | M | |
| 165 | OCUPAT | | | | | | | | | | | asistent maternal profesionist | M | |
| 166 | OCUPAT | | | | | | | | | | | asistent maternal profesionist | M | |
| 167 | OCUPAT | | | | | | | | | | | asistent maternal profesionist | M | |
| 168 | OCUPAT | | | | | | | | | | | asistent maternal profesionist | M | |
| 169 | OCUPAT | | | | | | | | | | | asistent maternal profesionist | M | |
| 170 | OCUPAT | | | | | | | | | | | asistent maternal profesionist | M | |
| 171 | OCUPAT | | | | | | | | | | | asistent maternal profesionist | M | |
| 172 | OCUPAT | | | | | | | | | | | asistent maternal profesionist | M | |
| 173 | OCUPAT | | | | | | | | | | | asistent maternal profesionist | M | |
| 174 | OCUPAT | | | | | | | | | | | asistent maternal profesionist | M | |
| 175 | OCUPAT | | | | | | | | | | | asistent maternal profesionist | M | |
| 176 | OCUPAT | | | | | | | | | | | asistent maternal profesionist | M | |
| 177 | OCUPAT | | | | | | | | | | | asistent maternal profesionist | M | |
| 178 | OCUPAT | | | | | | | | | | | asistent maternal profesionist | M | |
| 179 | OCUPAT | | | | | | | | | | | asistent maternal profesionist | M | |
| 180 | OCUPAT | | | | | | | | | | | asistent maternal profesionist | M | |
| 181 | OCUPAT | | | | | | | | | | | asistent maternal profesionist | M | |
| 182 | OCUPAT | | | | | | | | | | | asistent maternal profesionist | M | |
| 183 | OCUPAT | | | | | | | | | | | asistent maternal profesionist | M | |
| 184-274 | VACANT 91 POSTURI | | | | | | | | | | | asistent maternal profesionist | M | |
| Complex de servicii pentru copii si tineri cu dizabilitati „Pescarusul” | | | | | | | | | | | | | | |
| 275 | OCUPAT | | | | | | | | | | | sef centru | S | II |
| 276 | VACANT | | | | | | | | | | | administrator | M | I |

| | | | | | | | | | | | | | | | | | | | | | | |
|-----|--------|--|--|--|--|--|--|--|--|--|--|--|--|--|--|--|--|---------------------------|--|--|---|------------|
| 328 | OCUPAT | | | | | | | | | | | | | | | | | infirmier | | | G | |
| 329 | OCUPAT | | | | | | | | | | | | | | | | | infirmier | | | G | |
| 330 | OCUPAT | | | | | | | | | | | | | | | | | instructor de ergoterapie | | | M | |
| 331 | VACANT | | | | | | | | | | | | | | | | | instructor de ergoterapie | | | M | |
| 332 | OCUPAT | | | | | | | | | | | | | | | | | instructor de ergoterapie | | | M | |
| 333 | OCUPAT | | | | | | | | | | | | | | | | | instructor de ergoterapie | | | M | |
| 334 | OCUPAT | | | | | | | | | | | | | | | | | infirmier | | | G | |
| 335 | OCUPAT | | | | | | | | | | | | | | | | | infirmier | | | G | |
| 336 | OCUPAT | | | | | | | | | | | | | | | | | infirmier | | | G | |
| 337 | OCUPAT | | | | | | | | | | | | | | | | | infirmier | | | G | |
| 338 | OCUPAT | | | | | | | | | | | | | | | | | infirmier | | | G | |
| 339 | OCUPAT | | | | | | | | | | | | | | | | | infirmier | | | G | |
| 340 | OCUPAT | | | | | | | | | | | | | | | | | infirmier | | | G | |
| 341 | OCUPAT | | | | | | | | | | | | | | | | | Sef centru | | | S | II |
| 342 | VACANT | | | | | | | | | | | | | | | | | psiholog | | | S | stagiar |
| 343 | VACANT | | | | | | | | | | | | | | | | | psiholog | | | S | stagiar |
| 344 | VACANT | | | | | | | | | | | | | | | | | asistent social | | | S | practicant |
| 345 | OCUPAT | | | | | | | | | | | | | | | | | asistent social | | | S | practicant |
| 346 | OCUPAT | | | | | | | | | | | | | | | | | instructor de educatie | | | M | |
| 347 | OCUPAT | | | | | | | | | | | | | | | | | instructor de educatie | | | M | |
| 348 | OCUPAT | | | | | | | | | | | | | | | | | instructor de educatie | | | M | |
| 349 | OCUPAT | | | | | | | | | | | | | | | | | instructor de educatie | | | M | |
| 350 | OCUPAT | | | | | | | | | | | | | | | | | administrator | | | M | II |
| 351 | VACANT | | | | | | | | | | | | | | | | | infirmier | | | G | |

| | | | | | | | | | | | | | |
|-----|--------|--|--|--|--|--|--|--|--|--|---------------------------|---|--------------|
| 580 | OCUPAT | | | | | | | | | | inspector de specialitate | S | I |
| 581 | OCUPAT | | | | | | | | | | inspector de specialitate | S | IA |
| 582 | OCUPAT | | | | | | | | | | inspector de specialitate | S | II |
| 583 | OCUPAT | | | | | | | | | | inspector de specialitate | S | IA |
| 584 | OCUPAT | | | | | | | | | | inspector de specialitate | S | II |
| 585 | VACANT | | | | | | | | | | inspector de specialitate | S | debutant |
| 586 | OCUPAT | | | | | | | | | | referent | M | IA |
| 587 | OCUPAT | | | | | | | | | | referent | M | IA |
| 588 | OCUPAT | | | | | | | | | | ingrijitor | G | |
| | | | | | | | | | | | | | |
| | | | | | | | | | | | | | |
| 589 | VACANT | | | | | | | | | | psiholog | S | specialist |
| 590 | VACANT | | | | | | | | | | psiholog | S | specialist |
| 591 | VACANT | | | | | | | | | | asistent social | S | specialist |
| 592 | VACANT | | | | | | | | | | asistent social | S | specialist |
| 593 | VACANT | | | | | | | | | | asistent social | S | specialist |
| | | | | | | | | | | | | | |
| 594 | VACANT | | | | | | | | | | asistent social | S | specialist |
| 595 | VACANT | | | | | | | | | | asistent social | S | debutant |
| | | | | | | | | | | | | | |
| | | | | | | | | | | | | | |
| 596 | VACANT | | | | | | | | | | | | |
| 597 | VACANT | | | | | | | | | | asistent social | S | debutant |
| 598 | VACANT | | | | | | | | | | psiholog | S | practicant - |
| | | | | | | | | | | | | | |
| 599 | OCUPAT | | | | | | | | | | | S | II |
| 600 | VACANT | | | | | | | | | | medic | S | specialist |
| 601 | OCUPAT | | | | | | | | | | psiholog | S | specialist |
| 602 | OCUPAT | | | | | | | | | | asistent social | S | practicant |
| 603 | VACANT | | | | | | | | | | kinetoterapeut | S | debutant |

| | | | | | | | | | | | | | | | | | | | | | | | |
|-----|--------|--|--|--|--|--|--|--|--|--|--|--|--|--|--|--|--|--|---------------------------|--|--|----|------------|
| 662 | OCUPAT | | | | | | | | | | | | | | | | | | portar | | | G | |
| 663 | OCUPAT | | | | | | | | | | | | | | | | | | ingrijitor | | | G | |
| 664 | VACANT | | | | | | | | | | | | | | | | | | ingrijitor | | | G | debutant |
| | | | | | | | | | | | | | | | | | | | | | | | |
| | | | | | | | | | | | | | | | | | | | | | | | |
| | | | | | | | | | | | | | | | | | | | | | | | |
| | | | | | | | | | | | | | | | | | | | | | | | |
| 665 | OCUPAT | | | | | | | | | | | | | | | | | | Sef centru | | | S | II |
| 666 | VACANT | | | | | | | | | | | | | | | | | | medic | | | S | specialist |
| 667 | VACANT | | | | | | | | | | | | | | | | | | psiholog | | | S | practicant |
| 668 | VACANT | | | | | | | | | | | | | | | | | | asistent social | | | S | principal |
| 669 | OCUPAT | | | | | | | | | | | | | | | | | | asistent medical | | | PL | principal |
| 670 | OCUPAT | | | | | | | | | | | | | | | | | | asistent medical | | | PL | principal |
| 671 | VACANT | | | | | | | | | | | | | | | | | | asistent medical | | | PL | principal |
| 672 | OCUPAT | | | | | | | | | | | | | | | | | | asistent medical | | | PL | principal |
| 673 | OCUPAT | | | | | | | | | | | | | | | | | | asistent medical | | | PL | principal |
| 674 | OCUPAT | | | | | | | | | | | | | | | | | | asistent medical | | | PL | principal |
| 675 | VACANT | | | | | | | | | | | | | | | | | | asistent medical | | | PL | |
| 676 | OCUPAT | | | | | | | | | | | | | | | | | | instructor de ergoterapie | | | M | |
| 677 | OCUPAT | | | | | | | | | | | | | | | | | | instructor de ergoterapie | | | M | |
| 678 | OCUPAT | | | | | | | | | | | | | | | | | | instructor de ergoterapie | | | M | |
| 679 | OCUPAT | | | | | | | | | | | | | | | | | | instructor de ergoterapie | | | M | |
| 680 | OCUPAT | | | | | | | | | | | | | | | | | | instructor de ergoterapie | | | M | |
| 681 | VACANT | | | | | | | | | | | | | | | | | | instructor de ergoterapie | | | M | |
| 682 | VACANT | | | | | | | | | | | | | | | | | | instructor de ergoterapie | | | M | debutant |
| 683 | VACANT | | | | | | | | | | | | | | | | | | infirmier | | | G | debutant |
| 684 | OCUPAT | | | | | | | | | | | | | | | | | | infirmier | | | G | |
| 685 | VACANT | | | | | | | | | | | | | | | | | | infirmier | | | G | |
| 686 | OCUPAT | | | | | | | | | | | | | | | | | | infirmier | | | G | |
| 687 | OCUPAT | | | | | | | | | | | | | | | | | | infirmier | | | G | |
| 688 | OCUPAT | | | | | | | | | | | | | | | | | | infirmier | | | G | |
| 689 | OCUPAT | | | | | | | | | | | | | | | | | | infirmier | | | G | |

| | | | | | | | | | | | | | | | | | | | | | | |
|-----|--------|--|--|--|--|--|--|--|--|--|--|--|--|--|--|--|--|--|------------------------|--|-----|------------|
| 719 | OCUPAT | | | | | | | | | | | | | | | | | | sofer | | M;G | I |
| 720 | OCUPAT | | | | | | | | | | | | | | | | | | sef centru | | | |
| 721 | VACANT | | | | | | | | | | | | | | | | | | asistent social | | S | II |
| 722 | VACANT | | | | | | | | | | | | | | | | | | psiholog | | S | practicant |
| 723 | OCUPAT | | | | | | | | | | | | | | | | | | asistent medical | | PL | |
| 724 | OCUPAT | | | | | | | | | | | | | | | | | | asistent medical | | PL | principal |
| 725 | OCUPAT | | | | | | | | | | | | | | | | | | asistent medical | | PL | |
| 726 | OCUPAT | | | | | | | | | | | | | | | | | | asistent medical | | PL | |
| 727 | VACANT | | | | | | | | | | | | | | | | | | asistent medical | | PL | debutant |
| 728 | VACANT | | | | | | | | | | | | | | | | | | instructor ergoterapie | | M | |
| 729 | OCUPAT | | | | | | | | | | | | | | | | | | instructor ergoterapie | | M | |
| 730 | OCUPAT | | | | | | | | | | | | | | | | | | instructor ergoterapie | | M | |
| 731 | OCUPAT | | | | | | | | | | | | | | | | | | instructor ergoterapie | | M | |
| 732 | OCUPAT | | | | | | | | | | | | | | | | | | instructor ergoterapie | | M | |
| 733 | OCUPAT | | | | | | | | | | | | | | | | | | infirmier | | G | |
| 734 | OCUPAT | | | | | | | | | | | | | | | | | | infirmier | | G | |
| 735 | OCUPAT | | | | | | | | | | | | | | | | | | infirmier | | G | |
| 736 | OCUPAT | | | | | | | | | | | | | | | | | | infirmier | | G | |
| 737 | OCUPAT | | | | | | | | | | | | | | | | | | infirmier | | G | |
| 738 | OCUPAT | | | | | | | | | | | | | | | | | | infirmier | | G | |
| 739 | OCUPAT | | | | | | | | | | | | | | | | | | infirmier | | G | |
| 740 | OCUPAT | | | | | | | | | | | | | | | | | | infirmier | | G | |
| 741 | OCUPAT | | | | | | | | | | | | | | | | | | infirmier | | G | |
| 742 | OCUPAT | | | | | | | | | | | | | | | | | | infirmier | | G | |
| 743 | OCUPAT | | | | | | | | | | | | | | | | | | infirmier | | G | |
| 744 | OCUPAT | | | | | | | | | | | | | | | | | | infirmier | | G | |
| 745 | VACANT | | | | | | | | | | | | | | | | | | infirmier | | G | debutant |
| 746 | VACANT | | | | | | | | | | | | | | | | | | infirmier | | G | debutant |
| 747 | OCUPAT | | | | | | | | | | | | | | | | | | infirmier | | G | debutant |
| 748 | OCUPAT | | | | | | | | | | | | | | | | | | administrator | | M | II |
| | | | | | | | | | | | | | | | | | | | bucatar | | G | |

Centrul de ingrijire si asistenta pentru persoane adulte cu dizabilitati Racovita

| | | | | | | | | | | | | | | | | | | | | | |
|-----|--------|--|--|--|--|--|--|--|--|--|--|--|--|--|--|--|--|--|--------------------|---|---|
| 749 | OCUPAT | | | | | | | | | | | | | | | | | | bucatar | G | |
| 750 | OCUPAT | | | | | | | | | | | | | | | | | | muncitor calificat | G | I |
| 751 | VACANT | | | | | | | | | | | | | | | | | | spalatoarea | G | |

| Centrul pentru viata independenta pentru persoane adulte cu dizabilitati Braila | | | | | | | | | | | | | | | | | | | | | |
|---|--------|--|--|--|--|--|--|--|--|--|--|--|--|--|--|--|--|--|------------------------|----|------------|
| 752 | VACANT | | | | | | | | | | | | | | | | | | sef centru | S | II |
| 753 | VACANT | | | | | | | | | | | | | | | | | | asistent social | S | debutant |
| 754 | VACANT | | | | | | | | | | | | | | | | | | psiholog | S | practicant |
| 755 | VACANT | | | | | | | | | | | | | | | | | | asistent medical | PL | |
| 756 | VACANT | | | | | | | | | | | | | | | | | | asistent medical | PL | debutant |
| 757 | VACANT | | | | | | | | | | | | | | | | | | asistent medical | PL | debutant |
| 758 | VACANT | | | | | | | | | | | | | | | | | | instructor ergoterapie | M | debutant |
| 759 | VACANT | | | | | | | | | | | | | | | | | | instructor ergoterapie | M | debutant |
| 760 | VACANT | | | | | | | | | | | | | | | | | | instructor ergoterapie | M | debutant |
| 761 | VACANT | | | | | | | | | | | | | | | | | | instructor ergoterapie | M | debutant |
| 762 | VACANT | | | | | | | | | | | | | | | | | | infirmier | G | debutant |
| 763 | VACANT | | | | | | | | | | | | | | | | | | infirmier | G | debutant |
| 764 | VACANT | | | | | | | | | | | | | | | | | | infirmier | G | debutant |
| 765 | VACANT | | | | | | | | | | | | | | | | | | infirmier | G | debutant |
| 766 | VACANT | | | | | | | | | | | | | | | | | | infirmier | G | debutant |
| 767 | VACANT | | | | | | | | | | | | | | | | | | infirmier | G | debutant |
| 768 | VACANT | | | | | | | | | | | | | | | | | | infirmier | G | debutant |
| 769 | VACANT | | | | | | | | | | | | | | | | | | infirmier | G | debutant |
| 770 | VACANT | | | | | | | | | | | | | | | | | | infirmier | G | debutant |
| 771 | VACANT | | | | | | | | | | | | | | | | | | administrator | M | II |
| 772 | VACANT | | | | | | | | | | | | | | | | | | bucatar | G | |
| 773 | VACANT | | | | | | | | | | | | | | | | | | muncitor calificat | G | I |

| Funcția posturi | Număr | Ocupate | Vacante | Total |
|---|-------|---------|---------|-------|
| Nr. total de funcții publice de conducere | 5 | 1 | 6 | |
| Nr. total de funcții publice de execuție | 31 | 11 | 42 | |
| Nr. total de funcții contractuale de conducere | 13 | 2 | 15 | |
| Nr. total de funcții contractuale de execuție | 446 | 264 | 710 | |
| Nr. total de posturi din cadrul instituției/autorității publice | 495 | 278 | 773 | |



DIRECTOR GENERAL

AS

SIMONA DANIELA CIMPOAE

SEF SERVICIU

ANTIPA CLEMENTINA

Inspectori:

Badea Margareta

Folea Carmen

Matei Simona

Plopeanu Laura